

3M DI-NOC™ Architectural Finishes

Color Samples

Premium Wood
Stucco
Suède
Solid Color
Wood Grain

Dry Wood
Terracotta
Leather
Smooth Metal
Metal

Mortar
Ceramic
Fabric
Metallic Wood
Concrete

Plaster
Textile
Metallic Palette
Chipboard
Tile

Stone
Oxidized Metal
Plaster on Metal
Fine Wood
Abstract

Functional Products


Abrasion Resistant

Whiteboard Film

Exterior

Glass Finishes

2021 - 2023



Functional Products



ME-433AR

3M™ DI-NOC™ Architectural Finishes

Abrasion Resistant AR Series

 **74**
Patterns

Superior Abrasion Resistance

3M™ DI-NOC™ Architectural Finishes Abrasion Resistant AR Series are decorative surface finishes for interior applications in high-traffic areas. The abrasion resistant top layer reduces the visibility of scratches.

+10 New Patterns

Including designs unique for the AR series and expansion of Metallic series.



◀ Try scratching the surface with a coin.

Even after scratching, AR Series remains intact and maintains its aesthetic appearance.

ME-2293AR



WH-111

3M™ DI-NOC™ Architectural Finishes

Whiteboard Film

 **2**
Items

Transform Surfaces into Communication Spaces

3M™ DI-NOC™ Whiteboard Film is a unique architectural finish that can convert interior surfaces into creative and collaborative environments. Compatible with most dry erase markers.

Writing

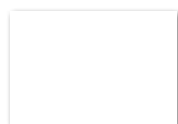
WH-111 offers excellent writing and erasing performance with a glossy surface.



WH-111

Writing and Projection

PWF-500 provides both whiteboard and projection capabilities, with the matte surface providing minimal glare from a projector.



PWF-500



FW-1122EX

3M™ DI-NOC™ Architectural Finishes
EX Series for Exterior

 **58**
Patterns

**Weather Resistant Surface Finish
for Exterior Applications**

3M™ DI-NOC™ EX Series for exteriors are durable, dimensionally stable, and weather resistant surface finishes for exterior applications. They can be applied directly on smooth, non-porous application surfaces. It is designed to maintain consistent finish and color, despite UV exposure and other conditions.

Coordinate Exterior and Interior Designs

Create a sense of unity between interior and exterior surfaces by using DI-NOC™ Standard Series and DI-NOC™ EX Series with the same design.



Excellent Weather Resistance

Exterior warranty ranges from 3 to 14 years, depending on the climate and installation location. Contact 3M Technical Support for detailed warranty information.



DG-1528

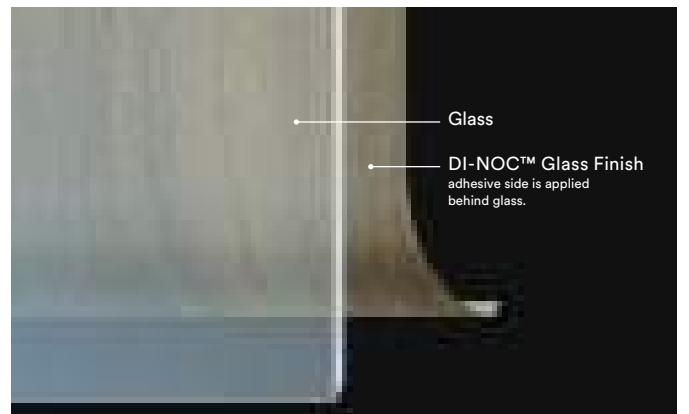
3M™ DI-NOC™ Architectural Finishes
Glass Finishes

 **22**
Patterns

3M™ DI-NOC™ Glass Finishes can be used behind many glass surfaces and provide an opaque dimensional look when viewed from the front glass surface. The current Product line can be found in the 3M™ Glass Finishes Product Catalog.

+4 New Patterns

You can make a glass decorated with unique designs by applying DI-NOC™ Glass Finishes.

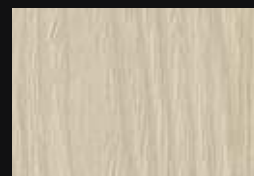


3M™ DI-NOC™

Architectural Finishes

2021-2023

Design Description Guide



- ❶ — WG-960
- ❷ —  — ❷
- ❸ —  WG-960EX



WG-960EX

Series | Number | Suffix for functional series




- ❶ Standard series description
- ❷ Supplementary information icon
- ❸ Functional series icon and design description

Standard and functional series have a similar appearance but are not identical.

Supplementary Information Icon List

- NEW** New design
- H** Horizontal woodgrain
- MT** Matte design
-  Large scale design
-  Not recommended for use on 3D compound curved surfaces

Functional Series Icon List

-  **EX Series :**
for exterior applications
-  **AR Series :**
for high traffic applications
-  **DG Series :**
for applications behind glass

WHAT IS A MASTERPIECE?

A masterpiece improves the lives of all who experience it. They are the objects of beauty inspired by nature and materials at hand — wood, textile, stone, leather, metal — and are limited only by the imagination of the master. 3M™ DI-NOC™ Architectural Finishes bring you the beauty of hundreds of natural elements with the additional new designs, Premium Wood, Metallic Palette and Artisanal Design, to inspire your masterpiece. We use advancements in science so you can capture the worlds natural beauty without sacrificing a forest or your creative ideals. You can create a stunning new space quickly, easily, and sustainably or breathe new life into an existing space almost overnight. The non-porous surface of DI-NOC™ Architectural Finishes is not just beautiful but easy to clean and disinfect. There are no boundaries. No limits. Only your imagination. Create your masterpiece.



Contents

Matte :

Premium Wood	8
Dry Wood	10
Mortar / Plaster	14
Plaster on Metal	16
Stone	16
Stucco / Terracotta / Ceramic	17
Textile	18
Fabric	18
Suede / Leather	19
Oxidized Metal	19
Metallic Palette	20
Smooth Metal	20
Solid Color	21

Basic :

Metallic Wood	23
Chipboard	23
Fine Wood	24
Wood Grain	32
Wood Grain Gloss	34
Metal	38
Stone / Concrete / Tile	42
Textile	44
Leather	45
Abstract	46
Solid Color	48
Abrasion Resistant	50
Exterior	51







**Do more
with your designs**

- 1 PS-504
- 2 ME-1781AR
- 3 AE-1632 / FW-1212 / PS-713
- 4 PS-1187
- 5 DW-1888MT / PS-503
- 6 Custom design of EX series
- 7 DW-1888MT
- 8 PS-504 / PA-045AR
- 9 PS-1870MT / PWF-500
- 10 FW-336 / PS-1869MT



Matte Series



GOOD
DESIGN
AWARD
2019

- 1 PW-2315MT NEW
- 2 ST-2171MT NEW
- 3 ME-2262 NEW
- 4 ST-1831DG
- 5 ME-2265 NEW
- 6 AE-2152MT NEW

1

2

3

Matte Coating Technology :

The new Matte Series utilizes the latest technology available. With a new state of the art matte surface, the Matte Series offers realistic texture by converting incident light into diffuse reflection and suppressing specular reflection. This series also provides fingerprint resistance. Explore the new world of design possibilities with 3M Matte Series.

Experience the difference in texture between standard series and new Matte Series

Matte Series
PS-1870MT

Standard Series
PS-999





5

6



Diffuse Reflection

The new state of the art matte surface converts incident light into diffuse reflection, providing very low gloss and a deep, high quality matte texture.



Fingerprint Resistant

The matte texture provides fingerprint resistance, reducing the visibility of fingerprints with an easy to maintain surface.



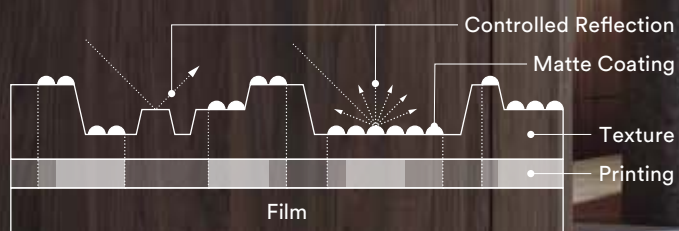
Tactile Feature

A realistic matte texture is created by combining the matte coating technology with high definition embossing technology.

Premium Wood

Controlled Reflection Technology

The new Premium Wood Series expresses the realistic appearance and texture of natural wood. The controlled reflection of the matte coating technology is combined with both fine and deep wood grain embossing and high-quality printing. This unique technology creates the optimum tone and texture of each species of wood.



PW-2314MT

NEW 

1 PW-2315MT NEW 2 ST-2171MT NEW



PW-2305MT

NEW



PW-2306MT

NEW



PW-2310MT

NEW



PW-2313MT

NEW



PW-2307MT

NEW



PW-2309MT

NEW



PW-2312MT

NEW



PW-2308MT

NEW



PW-2311MT

NEW



PW-2315MT

NEW



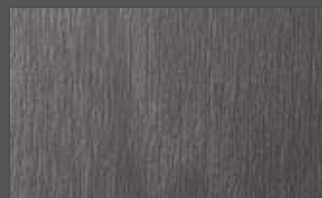
PW-2316MT

NEW



PW-2317MT

NEW



PW-2318MT

NEW



PW-2319MT

NEW

A

B

C

D

E

F

G

Dry Wood

A



DW-2197MT



DW-2199MT



DW-2200MT



B

C



DW-1903MT



DW-1894MT



DW-1888MT



DW-1875MT



D



DW-2198MT



DW-2201MT



DW-2202MT



DW-1902MT



E



DW-2198MT



DW-2201MT



DW-2202MT



DW-1993MT



F



DW-2203MT



DW-2205MT



DW-2204MT



G



DW-2203MT



DW-2206MT



DW-1889MT





DW-1883MT



DW-1901MT



DW-2207MT



DW-1878MT



DW-1873MT



DW-1876MT



DW-2209MT



DW-2208MT



DW-1897MT



DW-2210MT



DW-1877MT



DW-2212MT



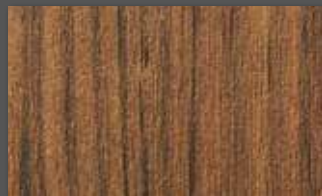
DW-1874MT



DW-2224MT



DW-1890MT



DW-1891MT



DW-1884MT



DW-2211MT



A

B

C

D

E

F

G

Dry Wood

A



DW-2218MT



DW-1872MT



DW-2219MT



B



DW-1893MT



DW-1872MT



DW-2219MT



C



DW-1898MT



DW-2223MT



DW-2226MT



DW-2225MT



D



DW-1898MT



DW-2223MT



DW-2226MT



DW-2225MT



E



DW-2221MT



DW-2220MT



DW-2222MT



F



DW-2221MT



DW-2220MT



DW-2222MT



G



DW-1881MT



DW-1886MT



DW-1871MT



DW-2227MT





DW-1882MT



DW-1879MT



DW-2214MT



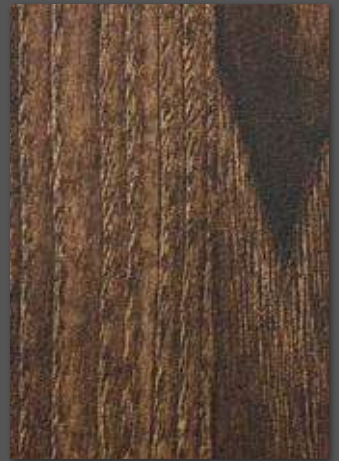
DW-1899MT



DW-2213MT



DW-2217MT



DW-1885MT



DW-1900HMT



DW-2216MT



DW-2215MT



DW-1887MT



DW-2228MT



DW-1992MT



DW-1896MT



DW-2229MT



A

B

C

D

E

F

G



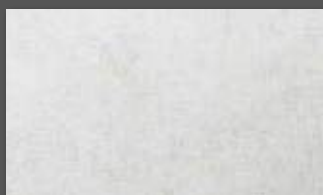
1

2

3

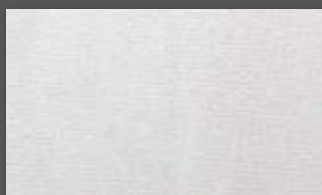
2

Mortar / Plaster



AE-2149

NEW



AE-2150

NEW

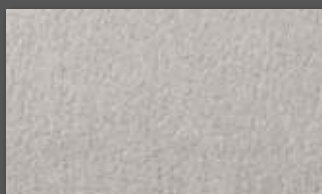


AE-2160

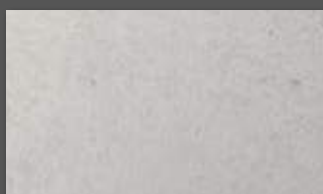
NEW



AE-1880MT



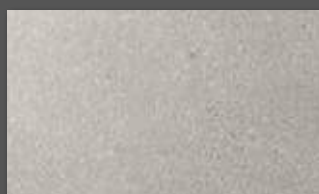
AE-1959MT



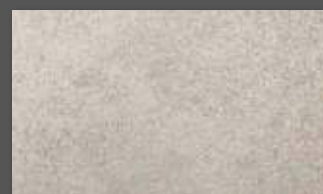
AE-1917MT



AE-1923MT



AE-1913MT



AE-2161

NEW



AE-2162MT

NEW



AE-2151

NEW

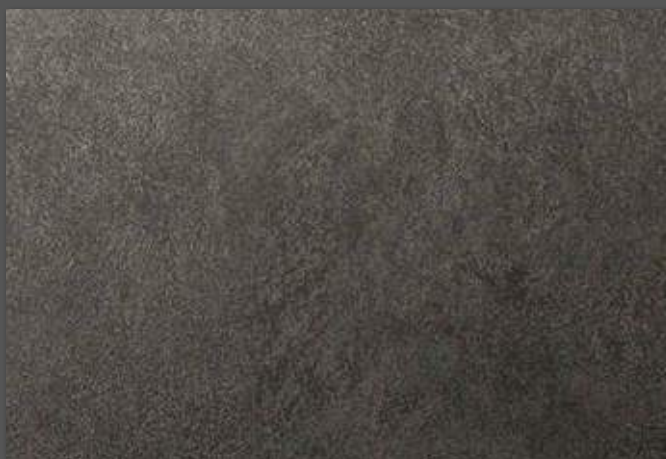


AE-2152MT

NEW



AE-1930MT



AE-2153MT

NEW



AE-1921MT



AE-1960MT



AE-1944MT



A

B

C

D

E

F

G

Plaster on Metal

A



FE-1964



AE-2154

NEW



AE-2155

NEW



B

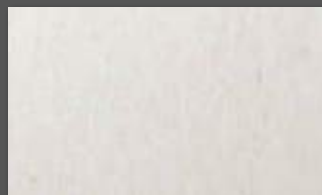
C

Stone

D



ST-1914MT



ST-1919MT



ST-2171MT

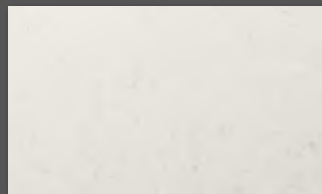
NEW



E



ST-1918MT



ST-1911MT

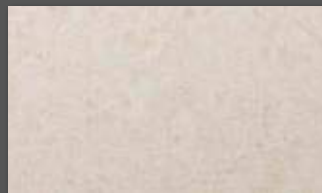


F



ST-2170MT

NEW



ST-1915MT



ST-1912MT



ST-1920MT



G

Stucco / Terracotta / Ceramic



AE-2156

NEW 📷



AE-1637



AE-1638



AE-2158

NEW 📷



AE-2157

NEW 📷



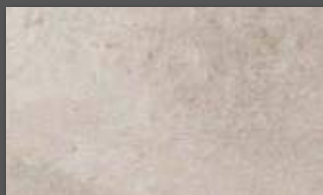
AE-2163MT

NEW 📷



AE-1717

📷



AE-1639



AE-2164MT

NEW 📷



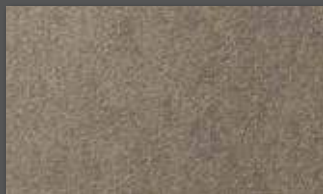
AE-2165MT

NEW 📷



AE-1926MT

📷



AE-1718



AE-1719
☑️ DG-1719



AE-1929MT

📷



AE-2159

NEW 📷



AE-1640



AE-2167MT

NEW 📷

A

B

C

D

E

F

G

Textile

A

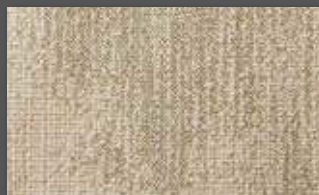


NU-2177

NEW 



FE-1966



NU-2178

NEW 



NU-2176MT

NEW 

B



NU-2175MT

NEW 

C



NU-2179

NEW 

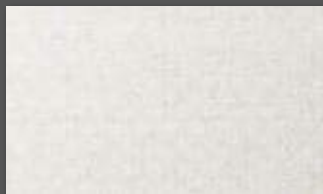


FE-1967

D

Fabric

E



NU-1942MT





NU-1941MT





NU-1940MT





NU-1935MT



F



NU-1934MT





NU-1943MT





NU-1937MT



G



NU-1938MT





NU-1936MT





NU-1939MT



Suede / Leather



SU-2233MT



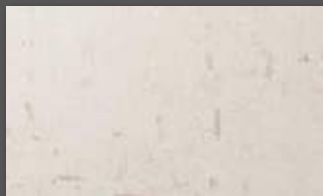
SU-2231MT



SU-2234MT



SU-2235MT



AE-1931MT



SU-2232MT



AE-1932MT



AE-1933MT



Oxidized Metal



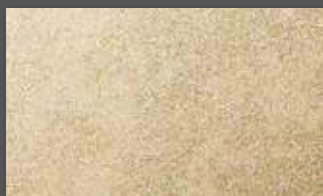
ME-2172



ME-2173



AE-1954



ME-2024



ME-2022



ME-2023

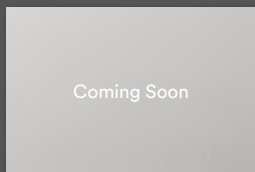


ME-2174

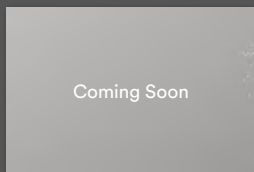


Metallic Palette

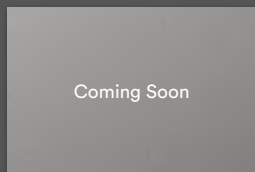
A



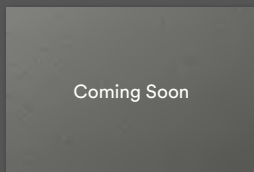
ME-2251MT NEW



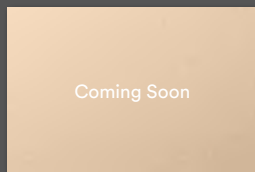
ME-2252MT NEW



ME-2253MT NEW

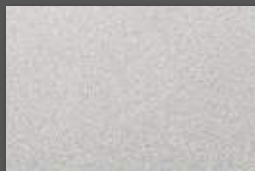


ME-2254MT NEW



ME-2255MT NEW

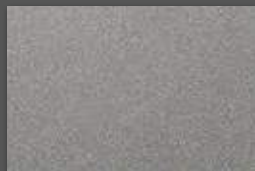
B



ME-2261 NEW



ME-2262 NEW



ME-2263 NEW



ME-2264 NEW



ME-2265 NEW

C



ME-2271 NEW



ME-2272 NEW



ME-2273 NEW



ME-2274 NEW

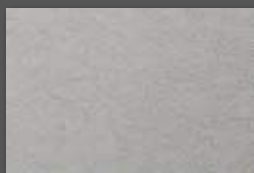


ME-2275 NEW

D



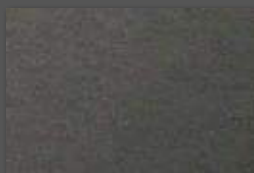
ME-2281AR NEW



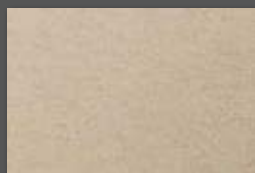
ME-2282AR NEW



ME-2283AR NEW



ME-2284AR NEW



ME-2285AR NEW

E



ME-2291AR NEW



ME-2292AR NEW



ME-2293AR NEW



ME-2294AR NEW

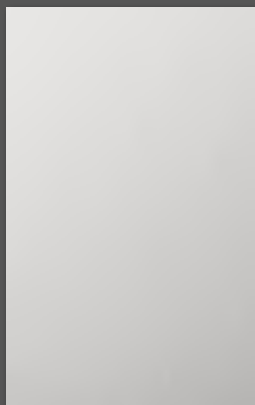


ME-2295AR NEW

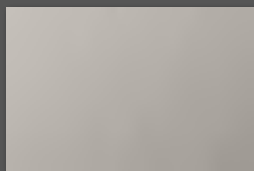
F

Smooth Metal

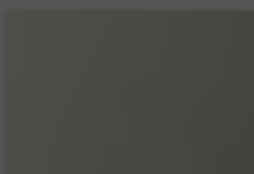
G



VM-1855MT



VM-1990MT



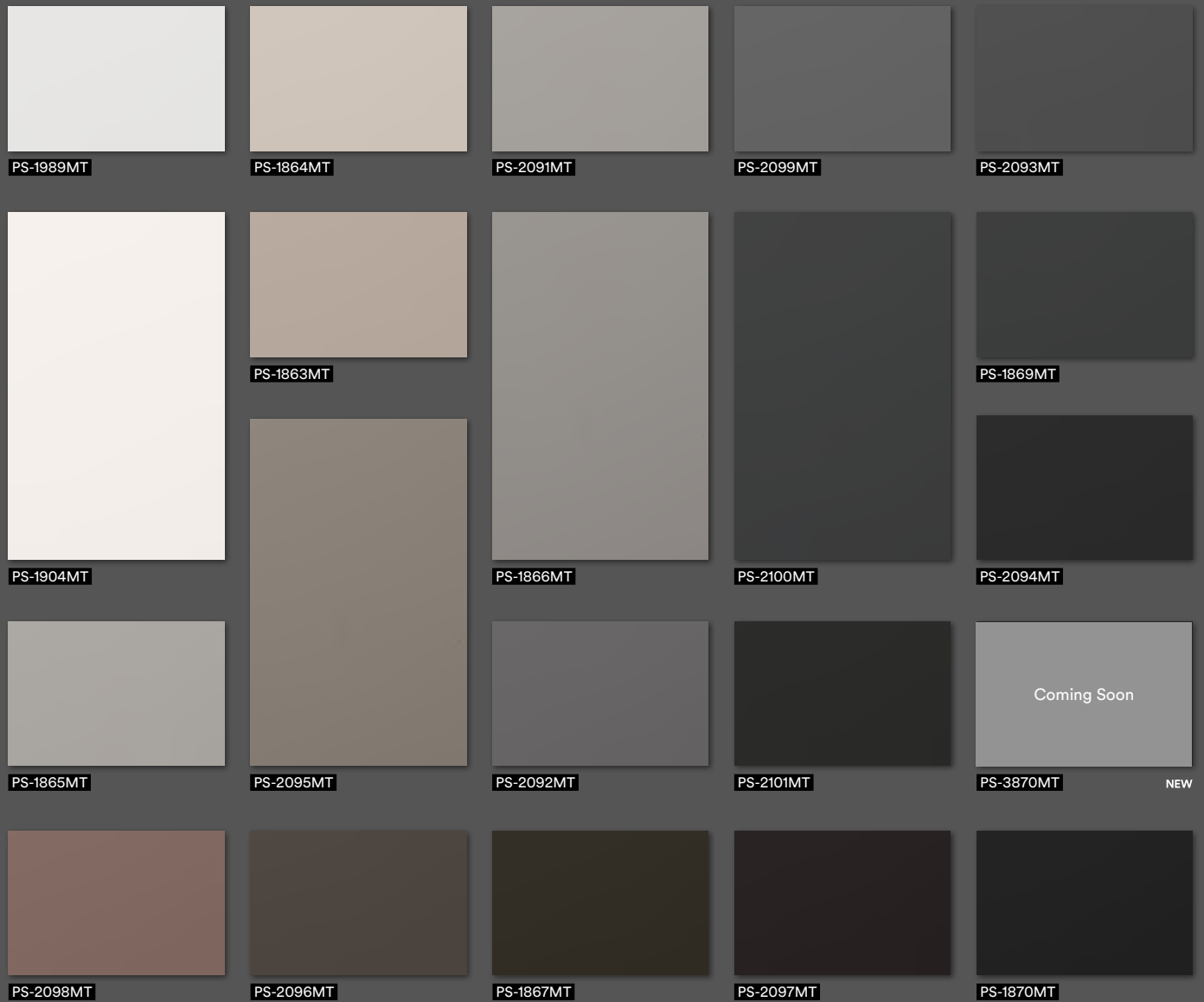
VM-1862MT



ME-2251MT NEW Coming Soon



Solid Color



PS-2094MT/PS-2101MT/PS-2100MT/PS-2099MT/PS-2093MT/PS-2092MT/PS-1989MT/PS-2095MT/PS-2098MT/PS-2096MT/PS-2097MT



1

2

Metallic Wood



MW-1416



MW-1242



MW-1833



MW-1832



MW-1418



MW-1244



MW-1417



MW-1834



MW-1783



MW-1177



MW-1419
☑ MW-1419DG



MW-776



MW-777

Chipboard



AE-2168

NEW



AE-2168 NEW

Fine Wood

A



FW-1761



FW-1758



FW-1683



FW-1765



B



FW-1209



FW-788



FW-1261



C



FW-7017
FW-7017AR



FW-1138
FW-1138AR



FW-1139H



FW-336



D



FW-1208



FW-7001



FW-1980



E



FW-1255



FW-1207

F



FW-1207 / ME-1434



FW-1271



FW-1217



G



FW-1210



NEW New design
H Horizontal woodgrain
MT Matte design

Large scale design
 Not recommended for use on 3D compound curved surfaces

EX series: for exterior applications
 AR series: for high traffic applications
 DG series: for applications behind glass



FW-1981



FW-1745



FW-1211



FW-789



FW-1214
 FW-1214EX



FW-1291



FW-1766



FW-1258



FW-1129
 FW-1129AR
 DG-1129



FW-1130H
 FW-1130HAR



FW-1285



FW-1256



FW-1988



FW-1750



FW-1972



FW-1289



FW-1293
 FW-1293AR



FW-1279



FW-1681



FW-1262



FW-1810



FW-1272

A

B

C

D

E

F

G

Fine Wood

A



FW-1974



FW-1304



FW-1307



B



FW-1987



FW-1754



FW-1976



FW-1978



C



FW-1767



FW-1302



FW-1287



FW-1971



D



FW-1266



FW-1213



FW-1215



FW-1294
FW-1294AR



E



FW-1259



FW-337
FW-337AR



FW-1977



FW-1273



F



FW-1983



FW-1218



FW-1770



G